

THE FOUNTAIN PEN GUIDE BY

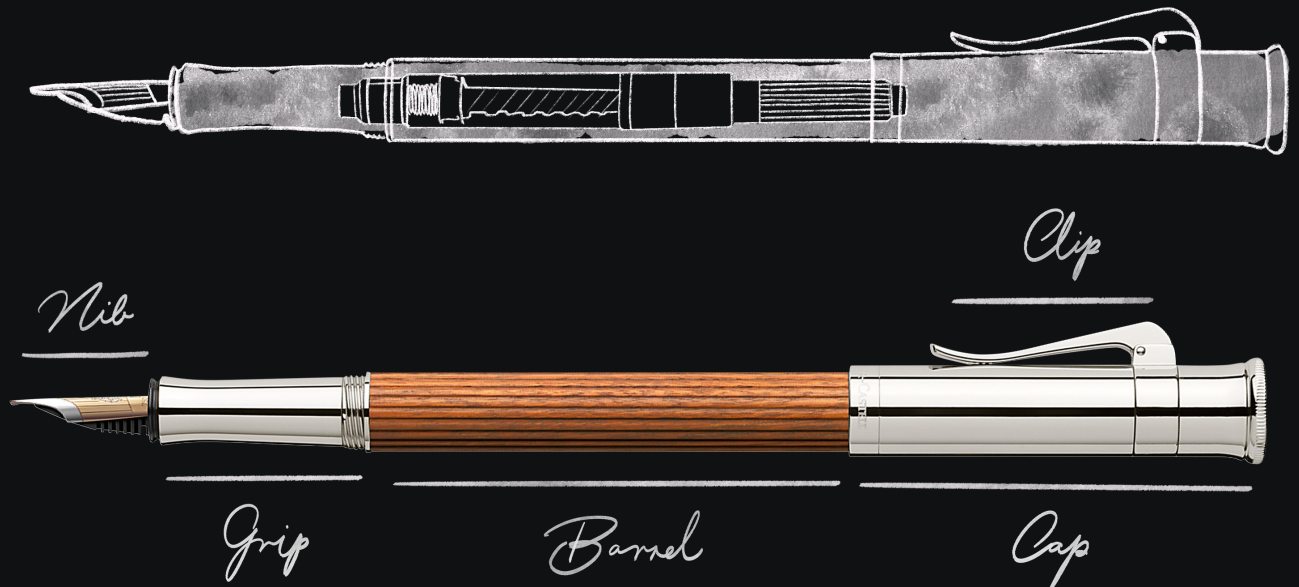


GRAF VON FABER-CASTELL



The best model for your writing style,  
the right care, our exclusive service and guarantee offers:  
everything that crowns your joy in your fountain pen.

# From gold nib to clip: Graf von Faber-Castell fountain pens



## Fine or broad?

### HOW TO FIND YOUR PERFECT NIB

#### *Crucial: the attributes of the nib*

Writing flow, writing style, harmony of movements: the nib width can have a decisive influence on all this. In addition to the five usual nib widths, our fountain pens are available in two additional designs to perfectly assist every writing style: the “O” style of nib, as in “oblique”, is a slightly slanted nib, giving your writing a calligraphic appearance. Of course, we always recommend testing the different nibs in a selected stationary store before buying a fountain pen. However, if that is not possible or you wish to order your pen online, this table and the writing examples illustrate which nib perfectly matches your writing style. Thanks to the unique shape of their tip, our fountain pens are also suitable for left-handed writing.

**EF (EXTRA FINE)**

---

*Graf von Faber-Castell*

For light handwriting without pressure.  
Very fine writing.

**F (FINE)**

---

*Graf von Faber-Castell*

For small handwriting with little pressure. Fine writing.

**M (MEDIUM)**

---

*Graf von Faber-Castell*

Suitable for every style of handwriting. Medium-thick strokes at normal writing pressure.

**B (BROAD)**

---

*Graf von Faber-Castell*

For large handwriting and signatures.  
Medium-thick strokes at normal writing pressure.

**OM (OBLIQUE MEDIUM) LEFT SLANT**

---

*Graf von Faber-Castell*

The slanted nib enables a thin “up-stroke” and a thick “down-stroke” – ensuring a distinctive writing style. This nib should be tested in person!

**OB (OBLIQUE BROAD) LEFT SLANT**

---

*Graf von Faber-Castell*

This nib has the same features as the OM nib, which is why it also should be tested in person.

**BB (EXTRA BROAD)**

---

*Graf von Faber-Castell*

For very large, wide and sweeping handwriting. Ideal for signatures.  
Very thick and strong strokes.

---

Correcting your nib width – even after your purchase  
Did you realise that you opted for the wrong nib width?  
Not a problem. Graf von Faber-Castell fountain pens in perfect condition with proof of purchase can be exchanged free of charge for any available nib width in the first three months after purchase.

# The best way to work with ink

## KEEPING EVERYTHING FLOWING

*Quality ink with a special rating:  
What does “indelible” mean?*

Important documents, such as certificates, contracts or decrees, need to be produced using indelible writing media. An ink is designated as being indelible if it is smudge-resistant, reproducible, light-fast and water-resistant, cannot be erased, and is resistant to certain chemicals and solvents. The exact test criteria are listed in the DIN standard ISO 12757-2. You can find our complete range of inks here:



[www.graf-von-faber-castell.com/ink](http://www.graf-von-faber-castell.com/ink)

*Cartridges & converters:  
How does the ink supply work?*

Cartridge or ink from a bottle? Your individual taste and everyday writing habits will determine this – cartridges ensure that anyone who spends a lot of time out and about will always have a spare ink to hand, while filling your pen using a converter is so much more environmentally-friendly. All Graf von Faber-Castell fountain pens come with a converter, meaning that the user can opt to use ink cartridges or a specific colour from an ink bottle.

### *Using ink cartridges*

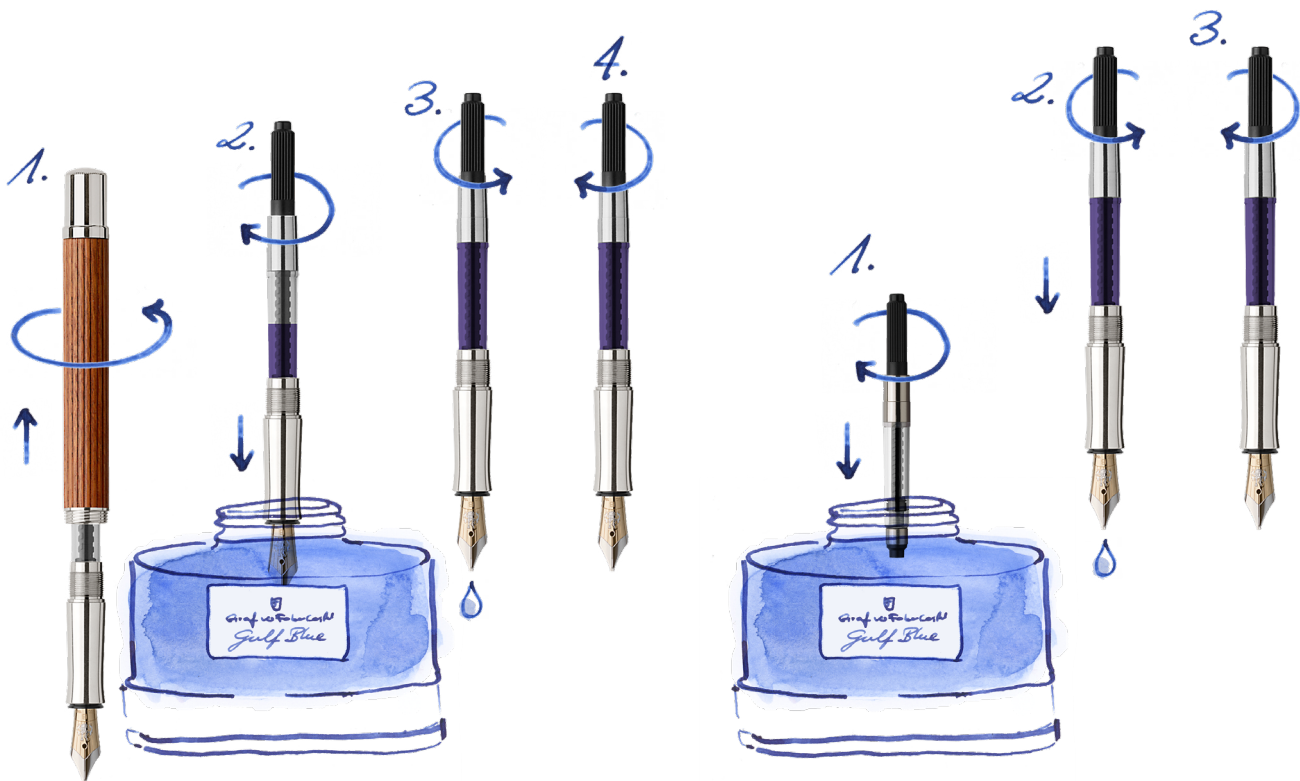
Cartridges are inserted by unscrewing the nib holder of the fountain pen and pressing the opening of the cartridge into the nib holder.

*Tip:  
A spare cartridge stored in the barrel provides for sufficient ink supply and stabilises the front cartridge*



### Filling the converter

There are two ways of filling the converter: you either dip it directly into the bottle of ink – or “fill” it through the nib holder. As this approach also means that the nib is already soaked with ink, it is immediately easier to write with, but there is also the risk of splashes and spots of ink during filling. Tip: irrespective of which method you choose – first lay a lint-free cloth underneath, such as a paper towel.



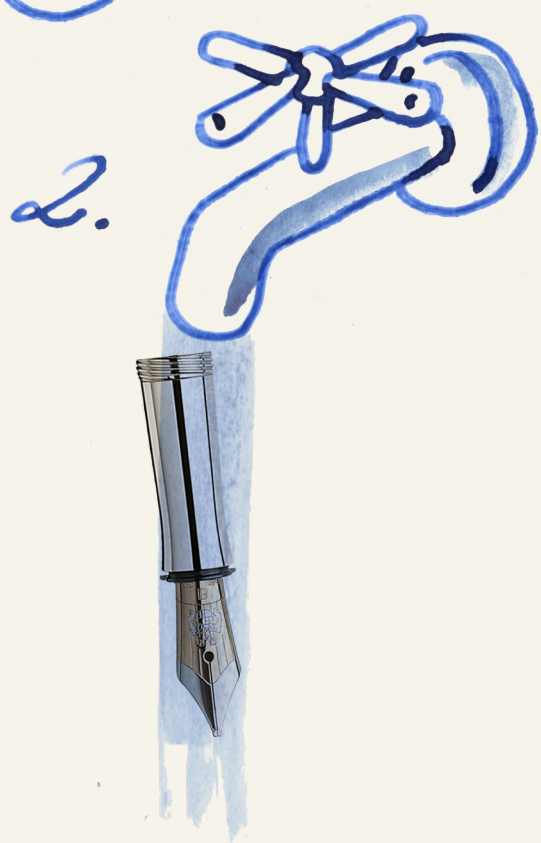
### Direct filling

Take the converter from the nib holder and turn the rotary mechanism counter-clockwise until the piston reaches the lower end of the glass converter. Then dip the converter approximately 0.5 cm into the ink bottle and turn the mechanism in the opposite direction so that the converter draws in ink rather like a syringe. Remove it from the bottle and allow one to two drops of ink to be “released” into the ink pot by turning it anti-clockwise. A final counter-turn of the rotary knob of the converter prevents the fountain pen from dripping immediately after it has been filled. When it is completely full, gently tap it against the bottle and use a sheet of kitchen paper to dab off any remaining drops. Insert it into the nib holder and screw the barrel back on. Tip: use lint-free material, e.g. kitchen paper, to stimulate the flow of ink by tapping the tip of the nib on the paper.

### Filling through the nib holder

First insert the converter, like an ink cartridge, into the nib holder of the fountain pen – making sure that it is seated really well. Then turn the rotary mechanism counter-clockwise until the piston reaches the lower end of the glass converter. Then dip the entire nib into the ink bottle and turn the rotary mechanism in the opposite direction until the converter is completely full. Remove it from the bottle and allow one to two drops of ink to be “released” into the ink pot by turning it anti-clockwise. A final counter-turn of the rotary knob of the converter prevents the fountain pen from dripping immediately after it has been filled. Dab the nib with kitchen paper and screw the barrel back on.

Cleaning under  
running water



Polish with a  
microfiber cloth



*Ink flow problems even after cleaning?*

Please contact our Customer Service if the ink flow slows down even after careful cleaning. We are happy to help!

#### *Correct storage*

We recommend always storing your fountain pen with the cap fitted.

#### *Care tip*

Preferably use a microfibre cloth to polish the surfaces. Is the barrel of your Graf von Faber-Castell fountain pen made of precious wood? Precious wood is a natural product, the colour of which can slightly vary and darken over time. No additional care is needed.

#### *Guarantee*

Every single fountain pen undergoes careful quality control prior to delivery. We are happy to help should your implement become damaged.

## Cleaning and care: Ensuring that you enjoy your fountain pen for many years to come

#### *Correct cleaning*

We recommend that you clean your fountain pen regularly – at the very least if the ink has dried up, when you are changing the ink colour, or if the flow of ink is slowing down. The rule of thumb: if you are using blue ink, clean your fountain pen approximately every three months. Clean it once a month if you are using coloured inks, as they contain more colouring which can accumulate in the ink guide over time and block the fine capillaries. How to clean your fountain pen: hold the front of your fountain pen under warm, running water until the water runs clear. Use a soft cloth to dry it carefully and wipe the nib dry on kitchen paper. Only replace the cap once the tip is fully dry. Regularly clean the converter as well – by filling it with lukewarm water, either directly or through the nib (see Filling), and draining it until the water runs clear.

---

*Contact our Customer Service at the address below – also if you need a replacement nib:*

Customer Care Centre  
Nürnberg Str. 2  
90546 Stein  
Germany  
[CCC@faber-castell.de](mailto:CCC@faber-castell.de)

*Do you have questions about your order?*

Phone: (0049) (0) 911 9965 7777  
[service.de@graf-von-faber-castell.com](mailto:service.de@graf-von-faber-castell.com)

*Do you have questions about our company or our products?*

Phone: (0049) (0) 911 9965-0  
[info@faber-castell.de](mailto:info@faber-castell.de)



GRAF VON FABER-CASTELL

